



U-ROLL

USA

U-ROLL

UNITÀ DI PIEGA

BENDING UNITS

ROLLBIEGER

UNIDAD DE PLEGADO



Accessorio che permette di eseguire la piegatura e calibratura in contemporanea della lamiera o acciaio. Permette inoltre di eseguire svariati tipi di piegature quali piega in sottosquadra (con angolazioni inferiori ai 90°), aperta (superiori ai 90°), ad ampio raggio mantenendo la tolleranza richiesta nell'angolazione. Esegue inoltre pieghe a "Z" aperte, doppia piega, ecc. Il sistema è composto da un rotante precedentemente sagomato a seconda delle applicazioni desiderate. Il prodotto è costruito con materiali molto tenaci e resistenti all'usura e compressione, temprati e trattati in superficie in modo tale da diminuire considerevolmente gli attriti. Il prodotto è brevettato.

Device that allows simultaneous calibration and bending of metal sheet or steel. It also allows the execution of many different types of folds, such as undersquare folds (with an angulation less than 90°), open folds (greater than 90°), large radius, maintaining requested tolerance angulation. Also performs "Z" open folds, doublefold etc. The system consists of a rotating previously shaped according to required applications. The product is built with very strong materials, wear and compression resistant, hardened and surface treated in order to considerably reduce friction. The product is patented.

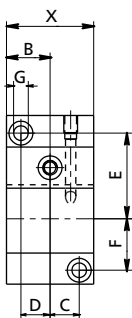
Rollbieger, der gleichzeitig die Biegung und die Verformung von Blechen erlaubt. Er ermöglicht außerdem auch andere Biegeformen wie das Überbiegen (mit Winkeln unter 90°), geöffnetes Biegen (über 90°), mit weitem Radius, innerhalb der angeforderten Toleranz. Er ermöglicht auch geöffnetes "Z" Biegen und "U" Biegen möglich. Das System besteht aus einem vorher definierten Drehteil. Der Rollbieger wird oberflächenbehandelt, was die Reibung sehr stark vermindert. Das Produkt ist patentiert.

Dispositivo que permite la calibración simultánea y plegado de chapa de metal o acero. Permite la ejecución de diferentes tipos de pliegues, menores, mayores de 90°, en "Z", etcétera, manteniendo la tolerancia de angulación solicitada. También puede llevar a cabo pliegues abiertos o dobles. El sistema consiste en una rotación previamente conformada de las aplicaciones deseadas. Producto muy resistente al desgaste, templado y tratado superficialmente con el fin de hacerlo muy resistente a la fricción. Producto Patentado.

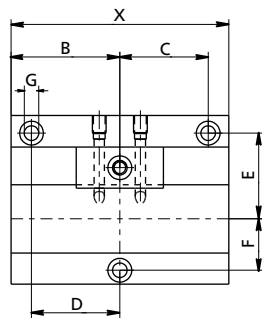
USA

U-ROLL-A ROLL

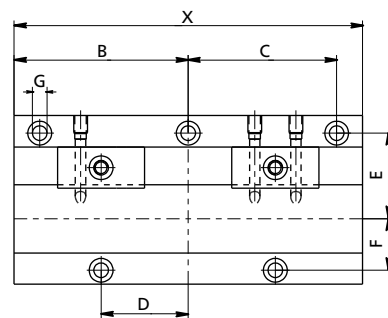
STILE AA



STILE BB

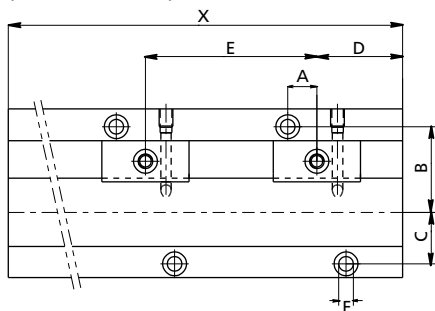


STILE CC / DD

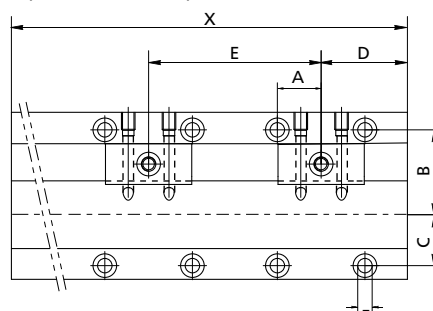


MODELLO - MODEL - MODELL - MODELO	STILE / STYLE / STYLE / ESTILO	X	B	C	D	E	F	G
U-ROLL-A15	AA	28.58	14.29	9	9	30	14	M4
	CC	88.9	44.45	38.46	22.23	30	14	M4
	DD	152.4	76.2	70.21	38.1	30	14	M4
U-ROLL-A25	AA	38.1	19.05	12	12	37.5	21.5	M6
	BB	101.6	50.8	44.25	44.25	37.5	21.5	M6
	CC	152.4	76.2	67.18	38.1	37.5	21.5	M6
U-ROLL-A40	AA	50.8	25.4	17	17	50	30	M8
	BB	127	63.5	51.51	51.51	50	30	M8
	CC	203.2	101.6	86.59	50.8	50	30	M8
U-ROLL-A50	AA	63.5	31.75	21.5	21.5	65	37.5	M10
	BB	177.8	88.9	73.89	73.89	65	37.5	M10
U-ROLL-A65	AA	76.2	38.1	25	25	79	44	M12
	BB	177.8	88.9	70.89	70.89	79	44	M12
U-ROLL-A75	AA	88.9	44.45	32.5	32.5	92.5	57	M12
	BB	152.4	76.2	58.19	58.19	92.5	57	M12

MODELLI U-ROLL-A15 / U-ROLL-A25 / U-ROLL-A40
(Ø 15 - Ø 25 - Ø 40)

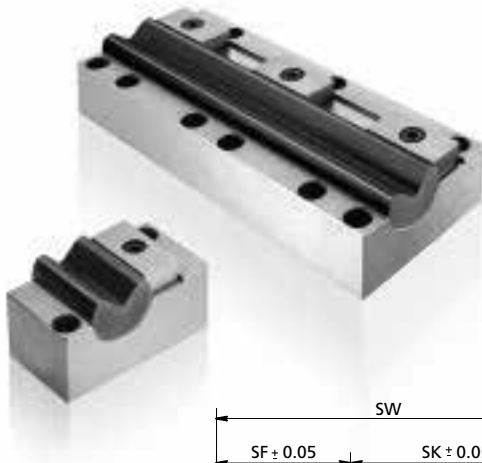


MODELLI U-ROLL-A50 / U-ROLL-A65 / U-ROLL-A75
(Ø 50 - Ø 65 - Ø 75)



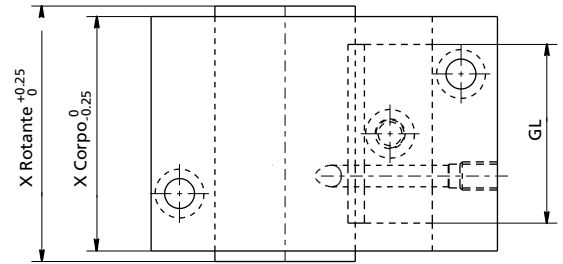
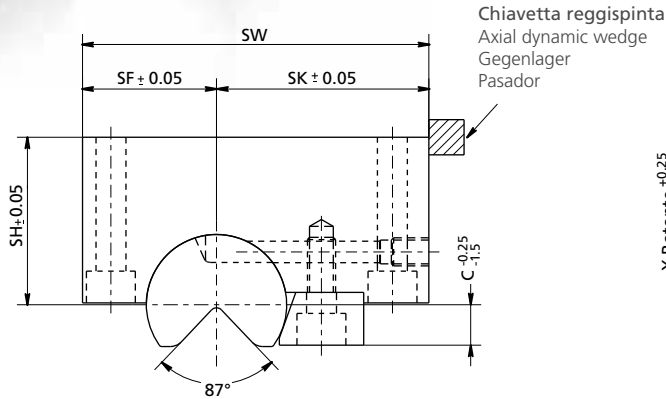
Ø MODELLO - MODEL - MODELL - MODELO	X	A	B	C	D	E	F
U-ROLL-A15 - Ø 15	152.4 - 305	9	30	14	X/8	X/4	M4
U-ROLL-A25 - Ø 25		12	37.5	21.5	X/8	X/4	M6
U-ROLL-A40 - Ø 40		17	50	30	X/6	X/3	M8
U-ROLL-A15 - Ø 15	317.5 - 600	9	30	14	X/12	X/6	M4
U-ROLL-A25 - Ø 25		12	37.5	21.5	X/12	X/6	M6
U-ROLL-A40 - Ø 40		17	50	30	X/10	X/5	M8
U-ROLL-A50 - Ø 50	203.2 - 305	31.5	66	37.5			M10
U-ROLL-A65 - Ø 65		35	79	44	X/4	X/2	M12
U-ROLL-A75 - Ø 75		40	92.5	57			M12
U-ROLL-A50 - Ø 50	317.5 - 600	31.5	66	37.5			M10
U-ROLL-A65 - Ø 65		35	79	44	X/6	X/3	M12
U-ROLL-A75 - Ø 75		40	92.5	57			M12

USA



U-ROLL-A
ROLL

UNITÀ DI PIEGA
BENDING UNITS
ROLLBIEGER
UNIDAD DE PLEGADO



ESEMPIO D'ORDINE - ORDER EXAMPLE - BEISPIEL BESTELLUNG - EJEMPLO DE PEDIDO

U-ROLL-A40-200

Modello - Model - Modell - Modelo / Lunghezza - Length - Länge - Ancho

> **Può lavorare anche senza lubrificazione.**
It works also without lubrication.
Der Rollbieger besitzt eine Langzeitschmierung.
Puede funcionar incluso sin lubricación.

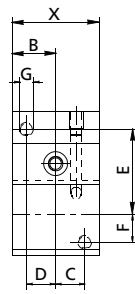
DIMENSIONI E SAGOMA STANDARD - DIMENSIONS AND STANDARD PROFILE
STANDARDABMESSUNGEN - DIMENSIONES Y PERFIL STANDARD

MODELLO - MODEL - MODELL - MODELO	U-ROLL-A15	U-ROLL-A25	U-ROLL-A40	U-ROLL-A50	U-ROLL-A65	U-ROLL-A75
Spessore lamiera - Metal sheet thickness Dicke des Blechs - Grueso de la chapa	0.25-1	1-1.9	1.9-3	3-4.1	4.1-5.3	5.3-6.4
	28.6	38.1	50.8	63.5	76.2	88.9
	88.9	101.6	127	177.8	177.8	152.4
Lunghezze standard (X) Standard Lengths Standard Längen Largo standard	152.4	152.4	203.2	304.8	304.8	304.8
	304.8	228.6	304.8	600	600	600
	600	304.8	600	*	*	*
	*	600	*	*	*	*
Lunghezza minima (X) - Min. Length Min. Länge - Ancho min.	28.6	38.1	50.8	63.5	76.2	88.9
Lunghezza massima (X) - Max. Length Max. Länge - Ancho max.	600	600	600	600	600	600
Diametro rotante - Rotating diameter Ø Biegeinsatz - Diametro de rotación	15	25	40	50	65	75
Larghezza corpo (SW) - Body width Breite des Grundkörpers - Largo del cuerpo	53.98	73.03	98.42	123.83	149.23	174.63
Dist. min. rotante/fronte (SF) - Dist. min. rotating body/front part Abstand min. Drehkörper / Vorderseite - Distancia rotante / frontal	19.05	28.58	38.1	47.63	57.15	69.85
Dist. rotante/chiavetta (SK) - Dist. rotating body / wedge Abstand Drehkörper / Rückseite - Dist. rotante / Chaveta	34.93	44.45	60.33	76.20	92.08	104.78
Dist. rotante/base (SH) - Dist. body/rotating body Abstand Drehkörper / Grundkörper - Dist. rotante / base	22.23	34.93	47.63	60.33	73.03	85.73
Larghezza supporto (GL) - Support width Breite Halter - Largo del soporte	28.6	38.1	50.8	63.5	76.2	88.9
Ingombro supporto (C) - Holder Overall Höhe Halter - Tamaño del soporte	4.9	7.9	11.5	15.85	19.5	23.5

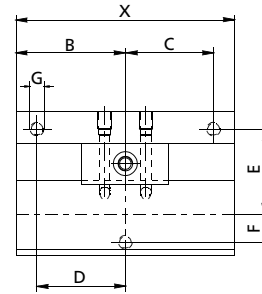
USA

U-ROLL-B ROLL

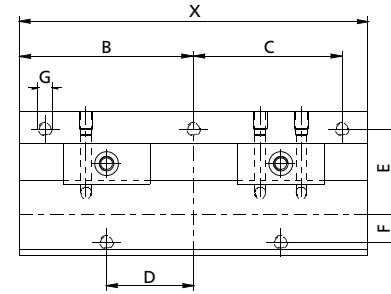
STILE AA



STILE BB

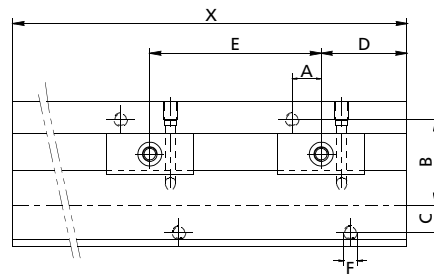


STILE CC / DD

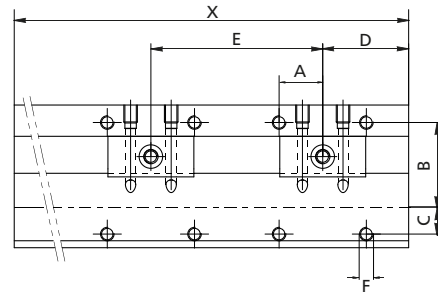


MODELLO - MODEL - MODELL - MODELO	STILE / STYLE / STYLE / ESTILO	X	B	C	D	E	F min	G
U-ROLL-B15	AA	28.58	14.29	9	9	30	4.55	M4
	CC	88.9	44.45	38.46	22.23	30	4.55	M4
	DD	152.4	76.2	70.21	38.1	30	4.55	M4
U-ROLL-B25	AA	38.1	19.05	12	12	37.5	7.92	M6
	BB	101.6	50.8	44.25	44.25	37.5	7.92	M6
	CC	152.4	76.2	67.18	38.1	37.5	7.92	M6
U-ROLL-B40	AA	50.8	25.4	17	17	50	15.9	M8
	BB	127	63.5	51.51	51.51	50	15.9	M8
	CC	203.2	101.6	86.59	50.8	50	15.9	M8
U-ROLL-B50	AA	63.5	31.75	21.5	21.5	65	19.87	M10
	BB	177.8	88.9	73.89	73.89	65	19.87	M10
U-ROLL-B65	AA	76.2	38.1	25	25	79	25.85	M12
	BB	177.8	88.9	70.89	70.89	79	25.85	M12
U-ROLL-B75	AA	88.9	44.45	32.5	32.5	92.5	32.15	M12
	BB	152.4	76.2	58.19	58.19	92.5	32.15	M12

MODELLI U-ROLL-B15 / U-ROLL-B25 / U-ROLL-B40
(Ø 15 - Ø 25 - Ø 40)



MODELLI U-ROLL-B50 / U-ROLL-B65 / U-ROLL-B75
(Ø 50 - Ø 65 - Ø 75)

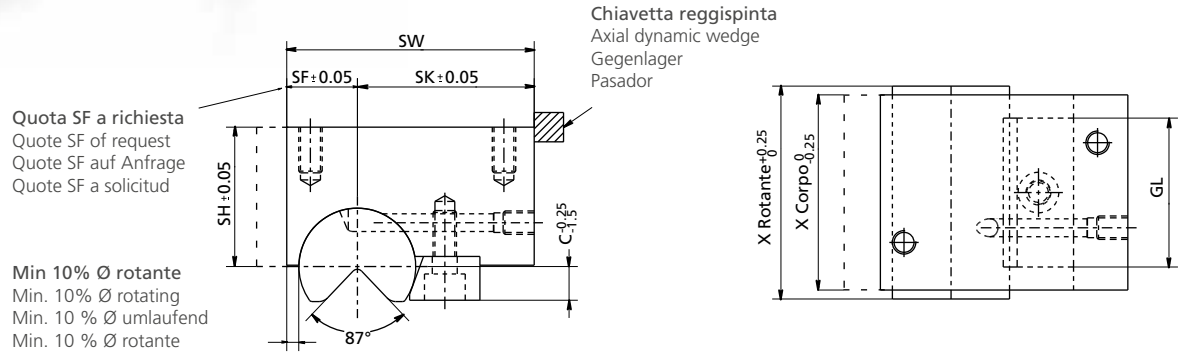


Ø MODELLO - MODEL - MODELL - MODELO	X	A	B	C min	D	E	F
U-ROLL-B15 - Ø 15	152.4 - 305	9	30	4.55	X/8	X/4	M4
U-ROLL-B25 - Ø 25		12	37.5	7.92	X/8	X/4	M6
U-ROLL-B40 - Ø 40		17	50	15.9	X/6	X/3	M8
U-ROLL-B15 - Ø 15	317.5 - 600	9	30	4.55	X/12	X/6	M4
U-ROLL-B25 - Ø 25		12	37.5	7.92	X/12	X/6	M6
U-ROLL-B40 - Ø 40		17	50	15.9	X/10	X/5	M8
U-ROLL-B50 - Ø 50	203.2 - 305	31.5	66	19.87			M10
U-ROLL-B65 - Ø 65		35	79	25.85	X/4	X/2	M12
U-ROLL-B75 - Ø 75		40	92.5	32.15			M12
U-ROLL-B50 - Ø 50	317.5 - 600	31.5	66	19.87			M10
U-ROLL-B65 - Ø 65		35	79	25.85	X/6	X/3	M12
U-ROLL-B75 - Ø 75		40	92.5	32.15			M12



U-ROLL-B ROLL

UNITÀ DI PIEGA
BENDING UNITS
ROLLBIEGER
UNIDAD DE PLEGADO



ESEMPIO D'ORDINE - ORDER EXAMPLE - BEISPIEL BESTELLUNG - EJEMPLO DE PEDIDO

U-ROLL-B40-200

Modello - Model - Modell - Modelo / Lunghezza - Length - Länge - Ancho

> Può lavorare anche senza lubrificazione.
It works also without lubrication.
Der Rollbieger besitzt eine Langzeitschmierung.
Puede funcionar incluso sin lubricación.

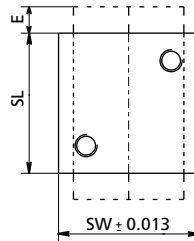
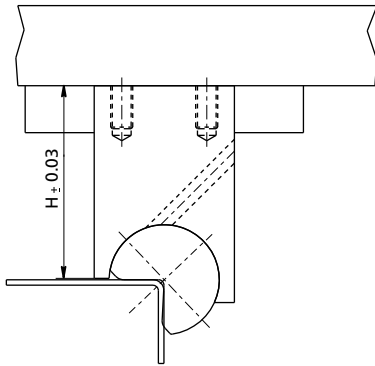
DIMENSIONI E SAGOMA STANDARD - DIMENSIONS AND STANDARD PROFILE
STANDARDABMESSUNGEN - DIMENSIONES Y PERFIL STANDARD

MODELLO - MODEL - MODELL - MODELO	U-ROLL-B15	U-ROLL-B25	U-ROLL-B40	U-ROLL-B50	U-ROLL-B65	U-ROLL-B75
Spessore lamiera - Metal sheet thickness Dicke des Blechs - Grueso de la chapa	0.25-1	1-1.9	1.9-3	3-4.1	4.1-5.3	5.3-6.4
	28.6	38.1	50.8	63.5	76.2	88.9
	88.9	101.6	127	177.8	177.8	152.4
Lunghezza standard (X) Standard Lengths Standard Längen Largo standard	152.4	152.4	203.2	304.8	304.8	304.8
	304.8	228.6	304.8	600	600	600
	600	304.8	600	*	*	*
	*	600	*	*	*	*
Lunghezza minima (X) - Min. Length Min. Länge - Ancho min.	28.6	38.1	50.8	63.5	76.2	88.9
Lunghezza massima (X) - Max. Length Max. Länge - Ancho max.	600	600	600	600	600	600
Diametro rotante - Rotating diameter Ø Biegeeinsetz - Diametro de rotación	15	25	40	50	65	75
Larghezza corpo (SW) - Body width Breite des Grundkörpers - Largo del cuerpo	44.53	59.45	84.33	106.2	131.08	149.78
Dist. min. rotante/fronte (SF) - Dist. min. rotating body/front part Abstand min. Drehkörper / Vorderseite - Distancia rotante / frontal	9.6	15	24	30	39	45
Dist. rotante/chiavetta (SK) - Dist. rotating body / wedge Abstand Drehkörper / Rückseite - Dist. rotante / Chaveta	34.93	44.45	60.33	76.20	92.08	104.78
Dist. rotante/base (SH) - Dist. body/rotating body Abstand Drehkörper / Grundkörper - Dist. rotante / base	22.23	34.93	47.63	60.33	73.03	85.73
Larghezza supporto (GL) - Support width Breite Halter - Largo del soporte	28.6	38.1	50.8	63.5	76.2	88.9
Ingombro supporto (C) - Holder Overall Höhe Halter - Tamaño del soporte	4.9	7.9	11.5	15.85	19.5	23.5

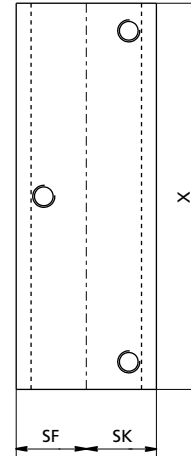
USA

U-ROLL-C / U-ROLL-CL ROLL

UNITÀ DI PIEGA
BENDING UNITS
ROLLBIEGER
UNIDAD DE
PLEGADO



VERSIONE STANDARD U-ROLL-C
STANDARD VERSION U-ROLL-C
STANDARD VERSION U-ROLL-C
VERSIÓN STANDARD "C" U-ROLL-C



VERSIONE SPECIALE U-ROLL-CL
SPECIAL VERSION U-ROLL-CL
SPEZIAL VERSION U-ROLL-CL
VERSIÓN ESPECIAL "C" U-ROLL-CL

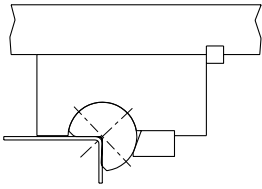
ESEMPIO D'ORDINE - ORDER EXAMPLE - BEISPIEL BESTELLUNG - EJEMPLO DE PEDIDO

U-ROLL-CL-40-80

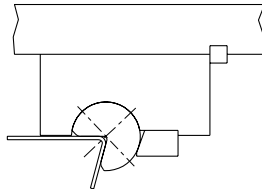
Modello - Model - Modell - Modelo / Lunghezza - Length - Länge - Ancho

MODELLO - MODEL - MODELL - MODELO	U-ROLL-C15	U-ROLL-C25	U-ROLL-C40	U-ROLL-C50
Spessore lamiera - Metal sheet thickness Dicke des Blechs - Grueso de la chapa	0.3-0.9	0.9 1.7	1.7-2.8	2.8-3.8
Diametro rotante (D) - Rotating diameter Biegeeinsatz - Diametro rotante	15	25	40	50
Larghezza corpo (SW) - Body width Breite des Grundkörpers - Largo del cuerpo	25.4	38.1	50.8	76.2
Lunghezza (SL) - Length Länge - Largo total	25.4	38.1	50.8	76.2
Altezza (H) - Height Höhe - Altura	50.8	50.8	69.85	76.2
Estensione rotante (speciale) (E) - Extension rotating special Rotierende Spezialerweiterung - Extension rotante (especial)	6.35	6.35	9.5	12.7
Foratura di fissaggio - Drilling of mounting Befestigungsbohrung - Agujero del montaje	M6	M8	M8	M12

MODELLO - MODEL - MODELL - MODELO	U-ROLL-CL25	U-ROLL-CL40	U-ROLL-CL50	U-ROLL-CL75
Spessore lamiera - Metal sheet thickness Dicke des Blechs - Grueso de la chapa	0.3-0.9	0.9-1.7	1.7-2.8	2.8-3.8
Diametro rotante (D) - Rotating diameter Biegeeinsatz - Diametro rotante	25	40	50	75
Larghezza corpo (SW) - Body width Breite des Grundkörpers - Largo del cuerpo	25.4	38.1	50.8	76.2
Lunghezza (specificare) (X) - Length Länge - Largo total	38.1-76.2	50.8-101.6	69.85-139.7	101.6-139.7
Altezza (H) - Height Höhe - Altura	50.8-76.2	50.8-76.2	69.85-95.25	76.2-101.6
Foratura di fissaggio - Drilling of mounting Befestigungsbohrung - Agujero del montaje	M6	M8	M8	M12



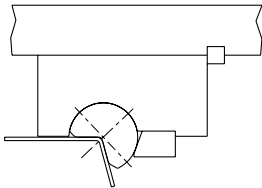
PIEGA NORMALE
NORMAL BEND
NORMALE BIEGUNG
PLIEGUE NORMAL



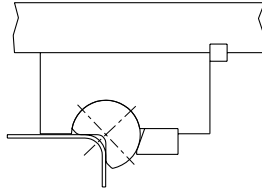
PIEGA SOTTOSQUADRA
ANGLE BEND
ÜBERBIEGUNG
PLIEGUE CERRADO

U-ROLL

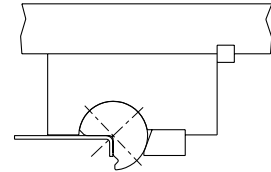
ESEMPI APPLICATIVI PARTICOLARI
PARTICULAR APPLICATION EXAMPLES
BESONDERE ANWENDUNGSBEISPIELE
EJEMPLOS DE APLICACIONES PARTICULAR



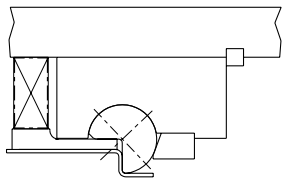
PIEGA APERTA
OPENED BEND
OFFENE BIEGUNG
PLIEGUE ABIERTO



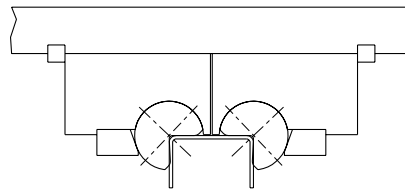
PIEGA AD AMPIO RAGGIO
BEND WITH WIDE RADIUS
BIEGUNG MIT WEITEM RADIUS
PLIEGUE CON RADIO



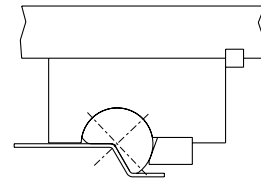
PIEGA CON BORDO CORTO
BEND WITH SHORT EDGE
BIEGUNG MIT KURZEM SCHENKEL
PLIEGUE CON BORDE CORTO



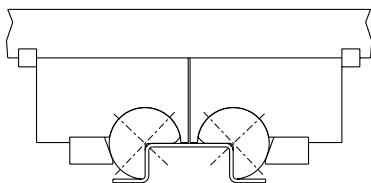
PIEGA A "Z"
"Z" BEND
"Z" BIEGUNG
PLIEGUE "Z"



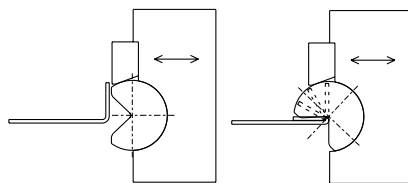
DOPPIA PIEGA
DOUBLE BEND
DOPPELTE BIEGUNG
DOBLE PLIEGUE



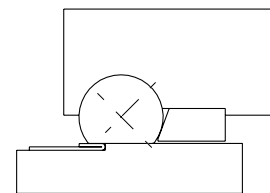
PIEGA A "Z" APERTA
OPENED "Z" BEND
OFFENE "Z" BIEGUNG
PLIEGUE "Z" ABIERTO



DOPPIA PIEGA APERTA A "Z"
DOUBLE OPENED "Z" BEND
DOPPELTE "Z" BIEGUNG
DOBLE PLIEGUE "Z"



PIEGA SCHIACCIATA CON CAM
CRUSHED BEND WITH CAM
FALTUNG MIT SCHIEBER
PLIEGUE PLANO CON CARRO DE PUNZONADOS



PIEGA SCHIACCIATA
CRUSHED BEND
FALTUNG
PLIEGUE PLANO

PER USI PARTICOLARI RIVOLGERSI AL NOSTRO UFFICIO TECNICO.
FOR PARTICULAR USES PLEASE CONTACT OUR TECHNICAL OFFICE.
FÜR BESONDERE ANWENDUNGEN BITTE SETZEN SIE SICH MIT UNSEREM TECHNISCHEM BÜRO IN VERBINDUNG.
PARA OTROS USOS, CONSULTAR CON EL DEPARTAMENTO TÉCNICO.

SI PREGA DI COMPLETARE LA SEGUENTE SCHEDA TECNICA E INVIARLA ALL'UFFICIO COMMERCIALE NEWSTARK VIA FAX AL NUM. +39 (0)49 9368154

AZIENDA _____ NOME-CONTATTO _____

INDIRIZZO _____











CITTÀ, PAESE, CAP _____ TELEFONO _____

ALTRI CONTATTI _____

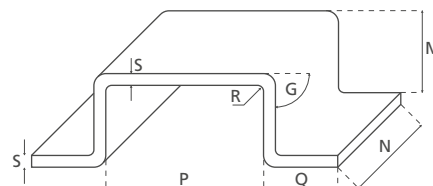
SI PREGA DI SCEGLIERE LA PROPRIA APPLICAZIONE (METTERE UNA CROCETTA)

TIPO DI APPLICAZIONE/STAMPO: 1 ST PASSO 2 ST. A BLOCCO 3 MACCHINA SPECIALE

TIPO DI PIEGHE DISPONIBILI

 TD PIEGA SOTTOQUADRA	 TE PIEGA APERTA	 TI PIEGA NORMALE	 TA PIEGA CON BORDO CORTO	 TB PIEGA AD AMPIO RAGGIO
 TH PIEGA A "Z" APERTA	 TC DOPPIA PIEGA	 TG DOPPIA PIEGA A "Z"	 TF PIEGA A "Z"	 TL PIEGA SCHIACCIATA

PRODUZIONE PREVISTA _____
 SPESSORE S _____
 TIPO DI MATERIALE _____
 DUREZZA _____
 TIPO DI PIEGA _____
 LUNGHEZZA N _____
 ANGOLAZIONE G _____
 ALTEZZA M _____
 LARGHEZZA P _____
 LARGHEZZA Q _____
 RAGGIO R _____



NOTE _____

ESEMPIO D'ORDINE
U-ROLL-B 50 L=150 87°
 Modello Ø Rullo Lunghezza "G": Angolazione della lamiera

SI PREGA DI ALLEGARE DISEGNO TECNICO DELLA PIEGA

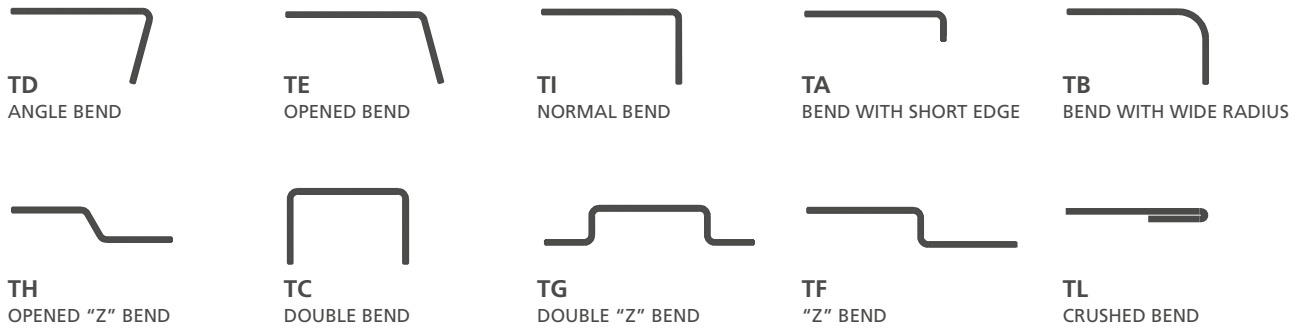
PLEASE FAX THIS WORKSHEET FOR FAST QUOTES TO NEWSTARK' S SALES OFFICE AT THE FOLLOWING NUMBER: +39 (0)49 9368154

COMPANY _____ CONTACT NAME _____
 ADDRESS _____
 CITY, STATE, ZIP _____ TELEPHONE _____
 OTHER CONTACTS _____

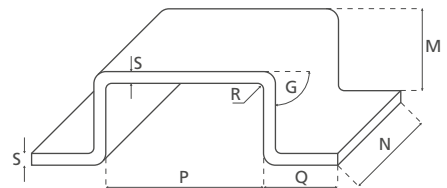
PLEASE DESCRIBE YOUR APPLICATION - THIS WILL BE FORMED IN (PLEASE CHECK):

TYPE OF APPLICATION/FORGING DIE: 1 PROGRESSIVE DIES 2 DIE BLOCK 3 SPECIAL

HERE ARE SOME OF THE MOST POPULAR APPLICATIONS



EXPECTED PRODUCTION _____
 THICKNESS S _____
 TYPE OF MATERIAL _____
 HARDNESS _____
 TYPE OF BEND _____
 LENGTH N _____
 ANGULATION G _____
 HEIGHT M _____
 WIDTH P _____
 WIDTH Q _____
 RADIUS R _____



NOTE _____

ORDER EXAMPLE
U-ROLL-B 50 **L=150** **87°**
 Model Ø Roll Length "G": Angulation of metal sheet

PLEASE WHEN YOU HAVE TO ORDER, PLEASE ATTACH TECHNICAL DRAWING OF THE BEND

ANFRAGEFORMULAR FÜR DIE ERSTELLUNG EINES ANGEBOTES ROLLBIEGER

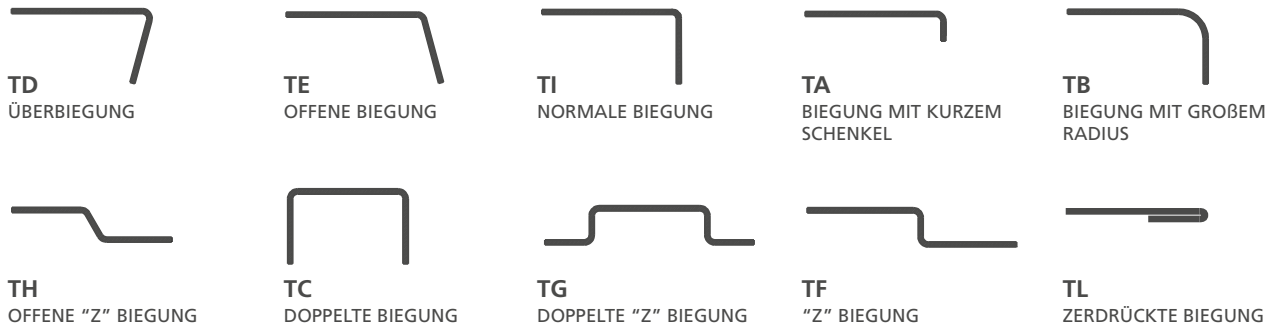
BITTE FAX DIESES ARBEITSBLATT FÜR SCHNELLE BESTELLUNG AN DIESE NUMMER: +39 (0)49 9368154

FIRMA _____ KONTAKT NAME _____
 ADRESSE _____
 STADT, LAND, PLZ _____ TELEFON _____
 ANDERE KONTAKTE _____

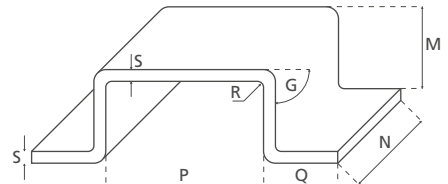
BITTE BESCHREIBEN SIE IHRE ANWENDUNG

BITTE ANKREUZEN: 1 FOLGEVERBUNDWERKZEUGEN 2 EINZELWERKZEUG 3 SPEZIAL MASCHINE

HIER SIND EINIGE DER POPULÄRSTEN ANWENDUNGEN



ERWARTETE PRODUKTION
 PRODUKTION STÜCKZAHLEN PRO JAHR _____
 DICKE **S** _____
 MATERIAL BEZEICHNUNG _____
 HÄRTE ZUGFESTIGKEIT N MM² _____
 TYP FÜR BIEGUNG _____
 LÄNGE **N** _____
 WINKEL **G** _____
 HÖHE **M** _____
 INNENMAß **P** _____
 BREITE **Q** _____
 RADIUS **R** _____



NOTE _____

BEISPIEL BESTELLUNG
U-ROLL-B 50 L=150 87°
 Modell Ø Rollen Länge "G": Blechwinkel

IM FALL EINER BESTELLUNG SENDEN SIE UNS EINE SKIZZE ODER TEILEZEICHNUNG

POR FAVOR COMPLETAR EL SIGUIENTE FORMULARIO TÉCNICO Y ENVIARLO AL DEPARTAMENTO COMERCIAL DE NEWSTARK A TRAVÉS DE FAX O NO. +39 (0) 49 9368154

EMPRESA _____ NOMBRE DE CONTACTO _____

DIRECCIÓN _____











CIUDAD / PAÍS / CÓDIGO POSTAL _____ TELÉFONO _____

OTROS CONTACTOS _____

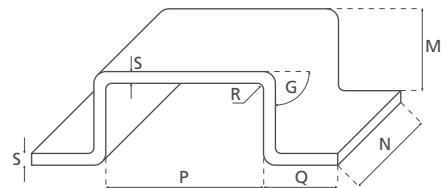
POR FAVOR ELEGIR LA APLICACIÓN (PONGA UNA CRUZ):

TIPO DE APLICACIÓN / MATRIZ: 1 DE PASO 2 BLOQUE 3 MAQUINA ESPECIAL

TIPOS DE PLIEGUES DISPONIBLES

 TD PLIEGUE CERRADO	 TE PLIEGUE ABIERTO	 TI PLIEGUE NORMAL	 TA PLIEGUE CON BORDE CORTO	 TB PLIEGUE CON RADIO
 TH PLIEGUE "Z" ABIERTO	 TC DOBLE PLIEGUE	 TG DOBLE PLIEGUE "Z"	 TF PLIEGUE "Z"	 TL PLIEGUE PLANO

PRODUCCIÓN PROGRAMADA _____
 ESPESOR S _____
 TIPO DE MATERIAL _____
 DUREZA _____
 TIPO DE PLEGADO _____
 LARGO N _____
 ANGULACIÓN G _____
 ALTURA M _____
 LARGO P _____
 LARGO Q _____
 RADIO R _____



NOTAS _____

EJEMPLO DE PEDIDO
ROLL-B 50 L=150 87°
 Modelo Ø Rollo del redondo Largo "G": Ángulo de la placa

POR FAVOR INCLUIR EL DISEÑO TÉCNICO DEL PLEGADO